

7 EAST 14th STREET

Between University Place & 5th Avenue
New York, NY 10003



As exclusive agents, we are pleased to offer the following retail opportunity:

- SIZE:** Ground Floor: 393 Square Feet
- FRONTAGE:** Approx. 10'
- POSSESSION:** September, 2011
- ASKING RENT:** Upon Request
- COMMENTS:**
- Within steps of Union Square
 - 24/7 Pedestrian Traffic
 - Non-cooking food uses considered

NEIGHBORS: Chase, Diesel, Whole Foods, Baked by Melissa, Bank of America, Run by Foot Locker, Lululemon Athletica, DSW, Forever 21, Ricky's, Duane Reade, Nordstrom Rack, Garden of Eden, Lush, Staples, Sketchers, Bank of America, Game Stop, The New School

FOR FURTHER INFORMATION PLEASE CONTACT:

Steven E. Baker, President
212-792-2636
stevenb@winick.com

Josh Singer
212-792-2630
jsinger@winick.com



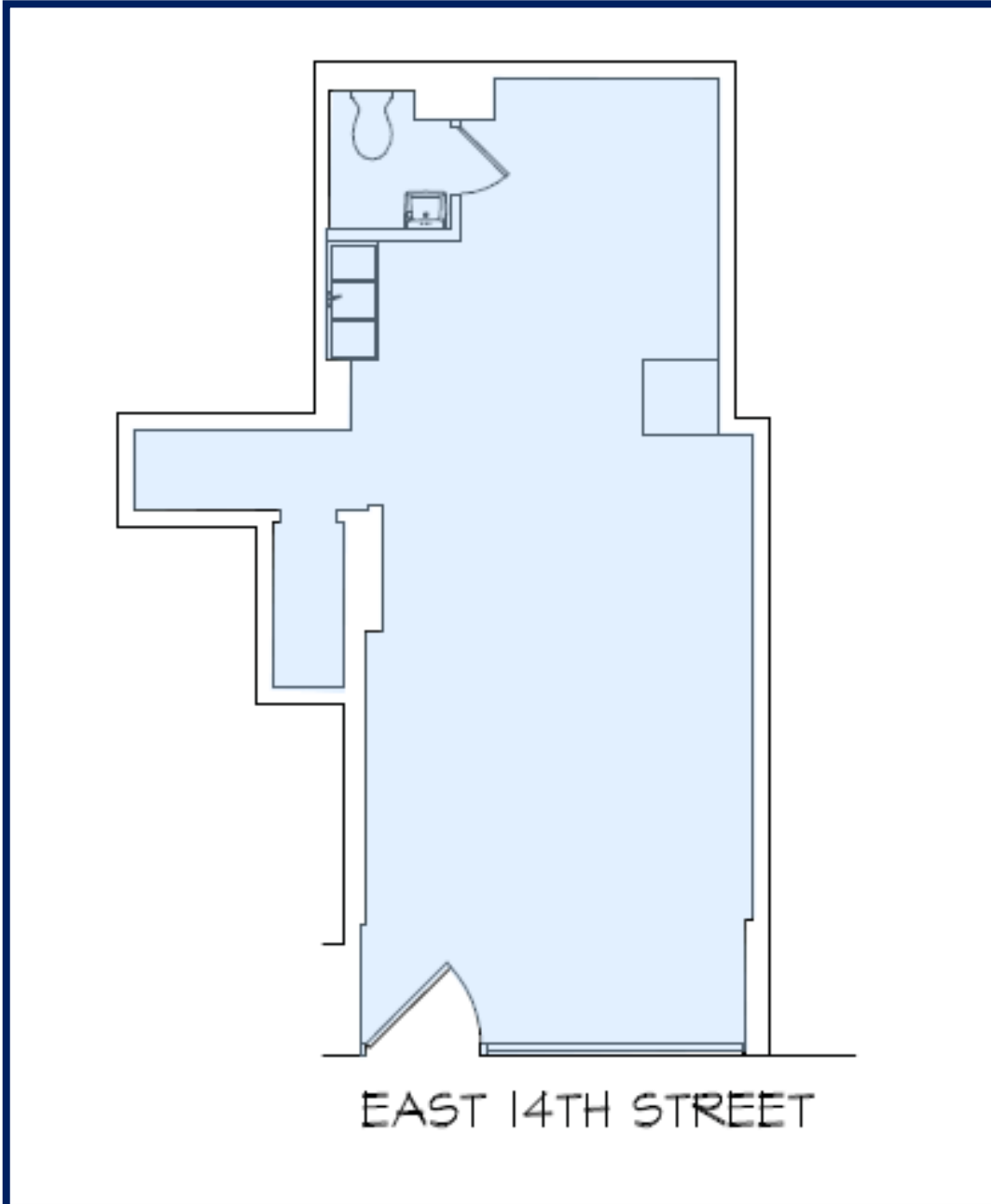
RETAIL

Winick Realty Group LLC- Licensed Real Estate Brokers

655 Third Avenue, 8th Floor, New York, NY 10017 T: 212-792-2600 F: 212-792-2660 www.winick.com

7 EAST 14th STREET

Between University Place & 5th Avenue
New York, NY 10003



Winick Realty Group LLC- Licensed Real Estate Brokers

655 Third Avenue, 8th Floor, New York, NY 10017 T: 212-792-2600 F: 212-792-2660 www.winick.com

ALTHOUGH ALL INFORMATION REGARDING PROPERTY FOR SALE, RENTAL OR FINANCING IS FROM SOURCES DEEMED RELIABLE SUCH INFORMATION HAS NOT BEEN VERIFIED, AND NO EXPRESS REPRESENTATION IS MADE NOR IS ANY TO BE IMPLIED AS TO THE ACCURACY THEREOF, AND IT IS SUBMITTED SUBJECT TO ERRORS, OMISSIONS, CHANGE OF PRICE, RENTAL OR OTHER CONDITIONS, PRIOR SALE, LEASE OR FINANCING, OR WITHDRAWAL WITHOUT NOTICE.

7 EAST 14th STREET

Between University Place & 5th Avenue
 New York, NY 10003



Winick Realty Group LLC- Licensed Real Estate Brokers

655 Third Avenue, 8th Floor, New York, NY 10017 T: 212-792-2600 F: 212-792-2660 www.winick.com

ALTHOUGH ALL INFORMATION REGARDING PROPERTY FOR SALE, RENTAL OR FINANCING IS FROM SOURCES DEEMED RELIABLE SUCH INFORMATION HAS NOT BEEN VERIFIED, AND NO EXPRESS REPRESENTATION IS MADE NOR IS ANY TO BE IMPLIED AS TO THE ACCURACY THEREOF, AND IT IS SUBMITTED SUBJECT TO ERRORS, OMISSIONS, CHANGE OF PRICE, RENTAL OR OTHER CONDITIONS, PRIOR SALE, LEASE OR FINANCING, OR WITHDRAWAL WITHOUT NOTICE.