

MEATPACKING DISTRICT

810 WASHINGTON STREET

WEST BLOCK BETWEEN GANSEVOORT AND HORATIO STREETS | NEW YORK, NY



APPROXIMATE SIZE

Ground Floor	
Space A	825 sf
Space B	895 sf
Space C	1,015 sf
Space D	1,115 sf

TERM

Long term

POSSESSION

May 2011

FRONTAGE

Space A	20 feet on Washington Street
Space B	20 feet on Washington Street
Space C	20 feet on Washington Street
Space D	20 feet on Washington Street

NEIGHBORING TENANTS

Intermix (coming soon), Zadig & Voltaire, Jeffrey, Earnest Sewn, Vince, Tory Burch, Scoop, Ports 1961 and Trina Turk

COMMENTS

- Newly renovated retail space
- Located at the base of the 318-unit West Coast rental apartment building
- Adjacent to the High Line entrance and the proposed Whitney Museum
- One block from The Standard Hotel, Soho House and the Gansevoort Hotel

FOR MORE INFORMATION, CONTACT EXCLUSIVE AGENTS

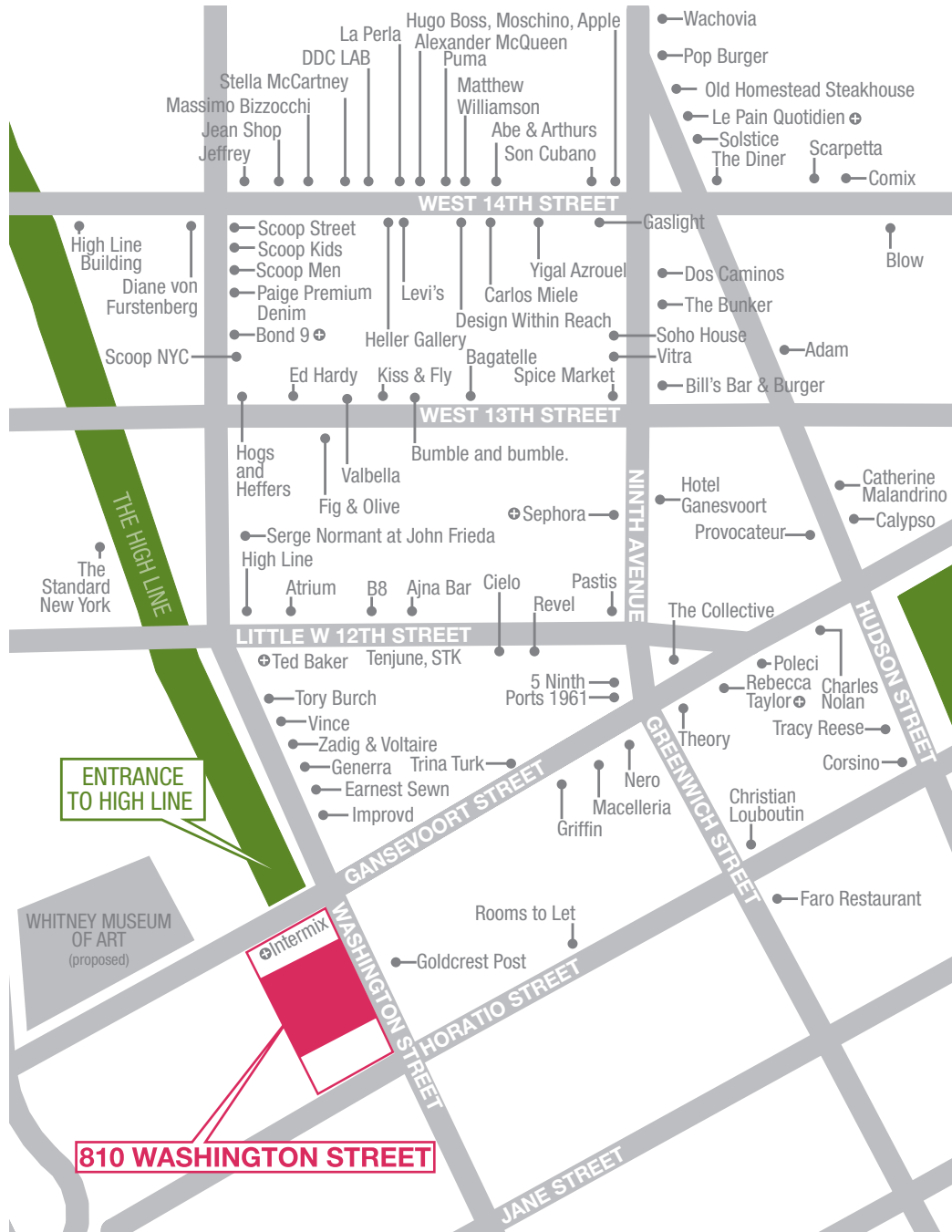
KAREN BELLANTONI 212.331.0116 | kbellantoni@rkf.com

PAMELA HABER 212.916.3361 | phaber@rkf.com

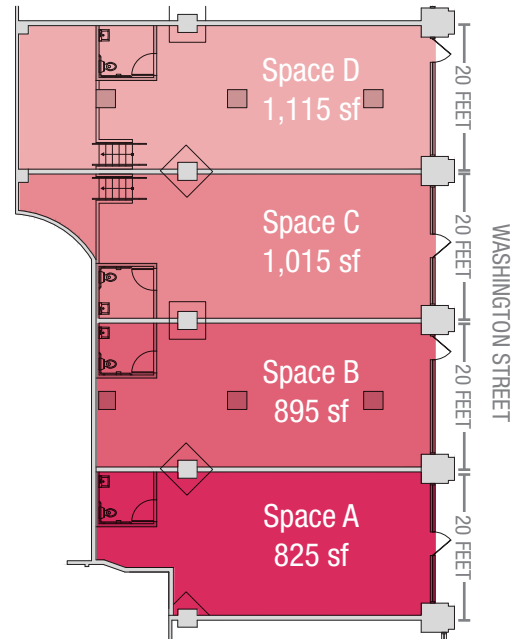


810 WASHINGTON STREET

AREA RETAIL



GROUND FLOOR



THE HIGH LINE

